

Rivet Bush Wall Chart

Round, Hexagon and Mini pattern dimensions with SWG to metric sheet conversion

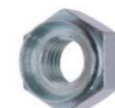
ROUND Pattern

Thread Size	Hole Diameter (mm)	Spigot Diameter (max)	Body Diameter (mm)	Body Height (mm)
M3	5.54	5.54	7.92	3.17
M3.5	6.73	6.73	9.52	3.17
M4	6.73	6.73	9.52	3.17
M5	7.92	7.92	11.1	3.81
M6	9.52	9.52	12.7	5.08
M8	12.7	12.7	15.87	6.35
M10	15.87	15.87	19.05	7.62
M12	19.05	19.05	25.4	10.16



HEXAGON Pattern

Thread Size	Hole Diameter (mm)	Spigot Diameter (max)	Body Across Flats (mm)	Body Height (mm)
M3	5.54	5.54	7.92	3.17
M4	6.73	6.73	7.92	3.17
M5	7.92	7.92	9.52	3.81
M6	9.52	9.52	11.1	5.08
M8	12.7	12.7	14.27	6.35
M10	15.87	15.87	19.05	7.62
M12	19.05	19.05	22.22	10.16



MINI Pattern

Thread Size	Hole Diameter (mm)	Spigot Diameter (max)	Body Diameter (mm)	Body Height (mm)
M2	3.5	3.5	5	2.3
M2.5	4.19	4.19	5.5	2.8
M3	4.19	4.19	5.5	2.8
M4	5.41	5.41	7	3.2
M5	6.4	6.4	8.5	3.8
M6	7.7	7.7	10	5.1



Gauge Thickness to mm Conversion Table

Imperial Gauge Size (SWG)	Imperial Gauge Thickness (mm)	Metric Sheet (mm)
4	5.893	6.0
6	4.877	5.0
8	4.064	4.0
10	3.251	3.0
12	2.642	2.5
14	2.032	2.0
16	1.626	1.5
18	1.219	1.2
20	0.914	1.0
22	0.711	0.8
24	0.559	0.6

Application Notes

Rivet Bush STANDOFFS have the same Hole & Body Diameter as either the Round or Mini Pattern.

TANK Bushes have the same Hole & Body Diameter as the Round Pattern.

Bushes with special dims made to order. E & OE